

Delaware Student Testing Program

RESULTS OF THE SCIENCE AND SOCIAL
STUDIES ASSESSMENTS
SPRING 2007 ADMINISTRATION
GRADES 8 and 11

Prepared by the Assessment and Analysis Group
Assessment and Accountability Branch
Delaware Department of Education

September 2007

OFFICERS OF THE DELAWARE DEPARTMENT OF EDUCATION

Valerie A. Woodruff

Secretary of Education

Nancy J. Wilson, Ph.D.

Deputy Secretary of Education

Robin R. Taylor, M.Ed.

Associate Secretary, Assessment and Accountability Branch

Michael R. Owens, Ed.D

Associate Secretary, Adult Education and Workforce Development

Martha Brooks, Ed.D

Associate Secretary, Curriculum and Instructional Improvement Branch

Dorcell Spence

Associate Secretary, Finance and Administrative Services

Wendy B. Roberts, Ph.D.

Director, Assessment and Analysis Work Group

Lisa K. Alexander, M.S

Darlene J. Bolig, Ed.D.

Helen C. Dennis, M.A.

Katia Foret, Ph.D.

James F. Hertzog, M.Ed.

Patsy G. Kersteter, Ph.D.

Ellen Mingione, M.Ed.

Joann F. Prewitt, M.A.

Liru Zhang, Ph.D.

Support Staff:

Ruth A. Uhey

Elaner M. Brown

Pearl Carrington

Theresa L. Kreer

Melinda L. Rash

Kimberly K. Rodriguez

The Delaware Department of Education is an equal opportunity employer. It does not discriminate on the basis of race, color, national origin, sex, sexual orientation, marital status, disability, age or Vietnam Era veteran's status in employment, or its programs and activities. Inquiries regarding non-discrimination policies should be directed to: Director of Human Resources and Quality Management, Delaware Department of Education, 401 Federal Street, Suite 2, Dover, DE 19901 or telephone 302-739-4025. For more information about the DSTP, write to the Department of Education, Assessment and Accountability Branch, 401 Federal Street, Suite 2, Dover, DE 19901, or telephone (302) 735-4090.

Document Control No. 95-01/07/08/10

This report is available on the World Wide Web at <http://www.doe.k12.de.us/aab>.

Executive Summary of 2007 Results

DSTP and DAPA Science & Social Studies, Grades 8 and 11

This document summarizes the results of the 2007 Delaware Student Testing Program (DSTP) in Science and Social Studies, and the 2007 Delaware Alternate Portfolio Assessment (DAPA) in Science and Social Studies. The DSTP is a series of standardized assessments. The DAPA is a portfolio that assesses students with disabilities meeting the criteria in the *Guidelines for Inclusion of Students with Disabilities and English Language Learners*. Science and Social Studies data for grades 4 and 6 are published in a separate document.

These results are part of a long-term effort to gather data on our students' educational progress and to use the data to inform our decisions about instruction. Studied over time, the data will help identify trends and patterns that can be directly related to curriculum and instruction, giving districts and schools additional decision-making tools. The data include summaries of test scores and participation.

DSTP Results

DSTP results are summarized at three levels: the state level, the district level and the school level. This executive summary contains the state level results. The two accompanying summaries are the district level results and the school level results. If a district or a school has fewer than 15 students in a given category (the Standards-Based Score N is less than 15), the number of students is reported, but the summary statistics associated with those students are not. Students are included in the Standards-Based Score N if their score is considered to be aggregable¹.

¹ See the *Delaware Student Testing Program Guidelines for Inclusion of Students with Disabilities and English Language Learners* or page 11 of this document for a definition of aggregable and non-aggregable scores.

The Science and Social Studies data are reported as Standards-Based Scores (SBSs) and Performance Levels (PLs). PLs tell how students are performing relative to the state’s content standards. Delaware’s five performance levels are listed below. The SBSs also measure students’ progress toward Delaware standards. They are reported on a scale that runs from approximately 100 to 500.

DAPA Results

DAPA results are summarized at two levels: the state level and the district level. This executive summary contains the state level results. The accompanying summaries contain the district level results. If a district has fewer than 15 students in a given category, the number of students is reported, but the summary statistics associated with those students are not. DAPA scores are reported in Performance Levels.

Socio-Economic Status

In the tables that report district and school level DSTP results, the right-most column contains the percent of students in the school that are eligible for free and reduced priced lunch (FRPL), which is often used in educational research as an indicator of socio-economic status.

DSTP and DAPA Performance Levels

Students who took the DSTP receive a performance level in science and social studies. Each DSTP performance level is based on the student’s Standards-Based Score. Students who completed a DAPA portfolio receive a performance level in science and social studies.

Level	Category	Description
5	Distinguished	Excellent performance
4	Exceeds the Standard	Very good performance
3	Meets the Standard	Good performance
2	Below the Standard	Needs improvement
1	Well Below the Standard	Needs significant improvement

Cut Scores for the DSTP and DAPA Assessments

The cut scores for DSTP Science appear in Table 2. The indicated numbers represent the lowest possible scores a student can earn and still be within the indicated performance level.

Grade	Below	Meets	Exceeds	Distinguished
8	280	300	325	338
11	282	300	325	335

Table 3 contains similar information for Social Studies. The indicated numbers represent the lowest possible scores a student can earn and still be within the indicated performance level.

Table 3 – DSTP Social Studies Cut Scores				
Grade	Below	Meets	Exceeds	Distinguished
8	282	300	325	335
11	276	300	325	337

Table 4 contains the scores a student can earn on the DAPA portfolio and the corresponding performance level.

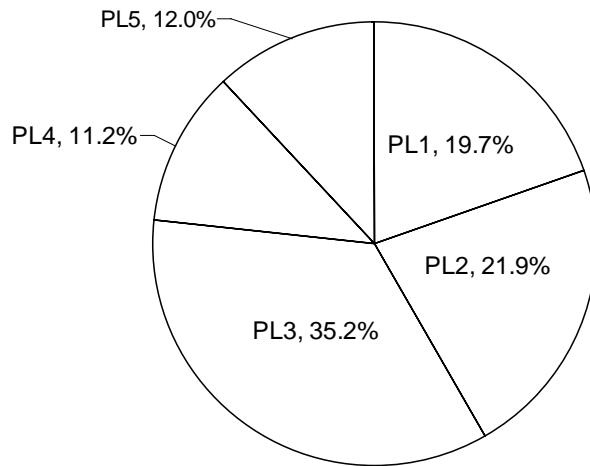
Table 4 – DAPA Proficiency Levels		
Level	Performance Level	Score Range
5	Distinguished (excellent performance)	19, 20
4	Exceeds the standard (very good performance)	17, 18
3	Meets the standard (good performance)	15,16
2	Below the standard (needs improvement)	11-14
1	Well below the standard (needs significant improvement)	4-10

2007 Science Results, Grades 8 and 11

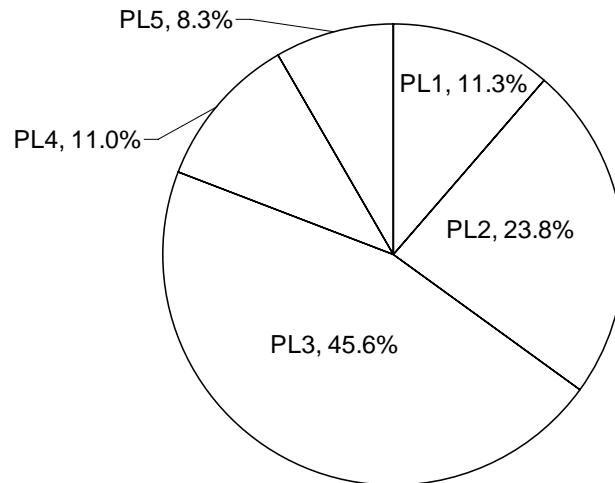
Chart 1, Student Performance Levels, DSTP Science

(Percentages may not sum to exactly 100 because of rounding.)

Grade 8 Science Performance Levels



Grade 11 Science Performance Levels



PL1: Well Below the Standard	PL2: Below the Standard	PL3: Meets the Standard
PL4: Exceeds the Standard	PL5: Distinguished	

Chart 2, Standards-Based Scores, DSTP Science

Mean Standards-Based Scores, DSTP Science

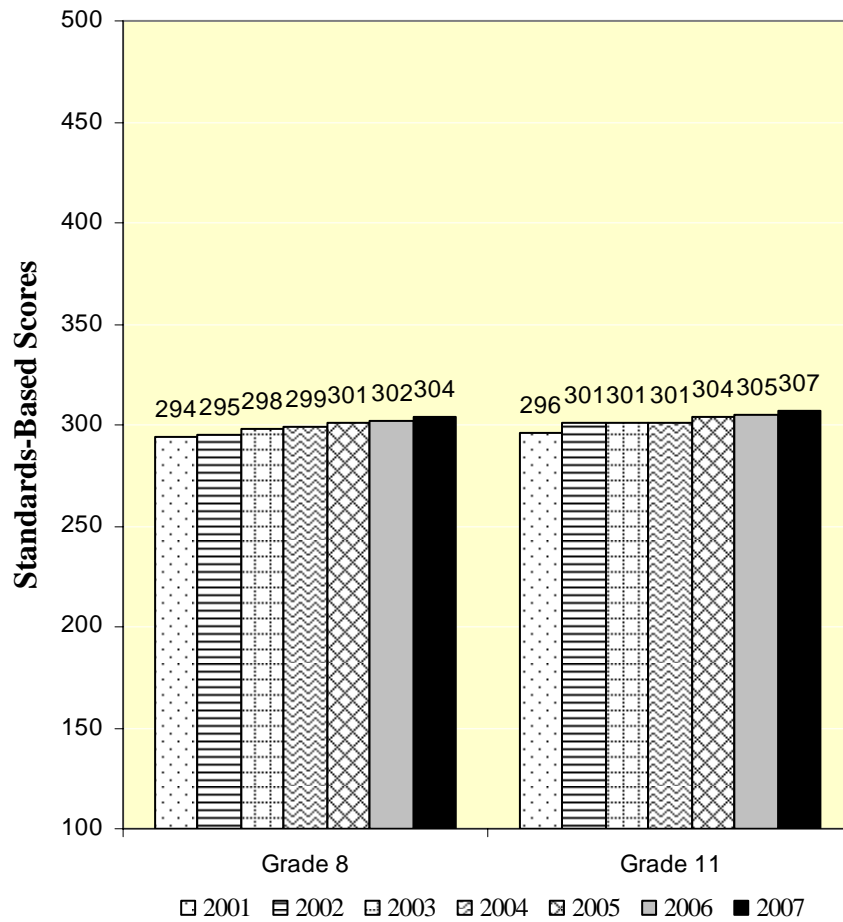
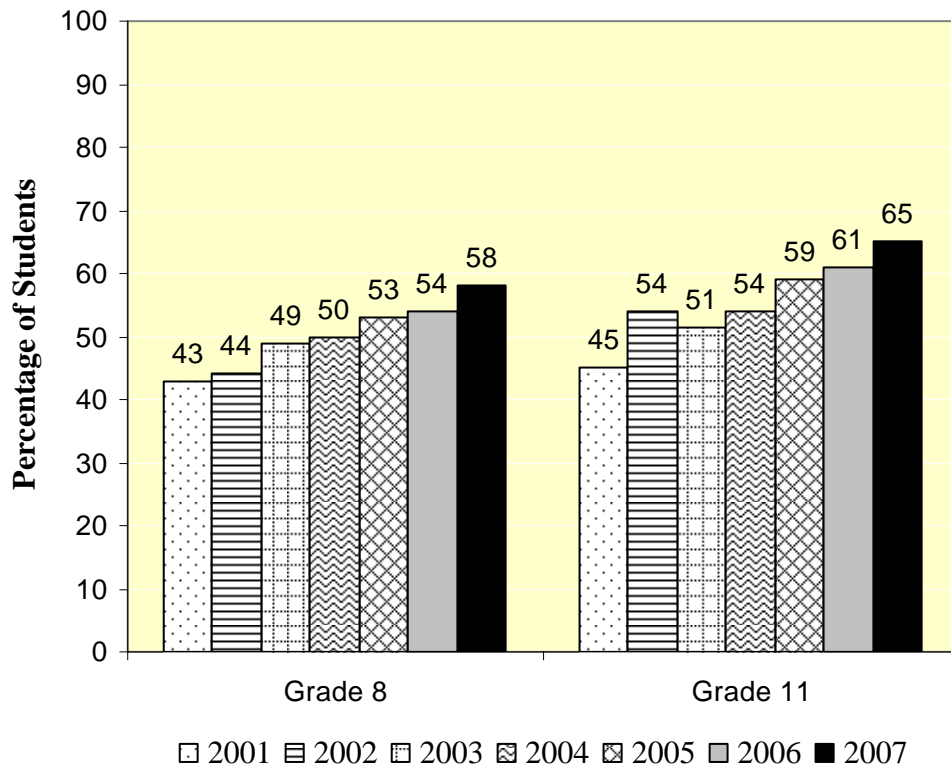


Chart 3, Students Meeting/Exceeding the Standard, DSTP Science

Percentage of Students Meeting/Exceeding Delaware's Science Standards

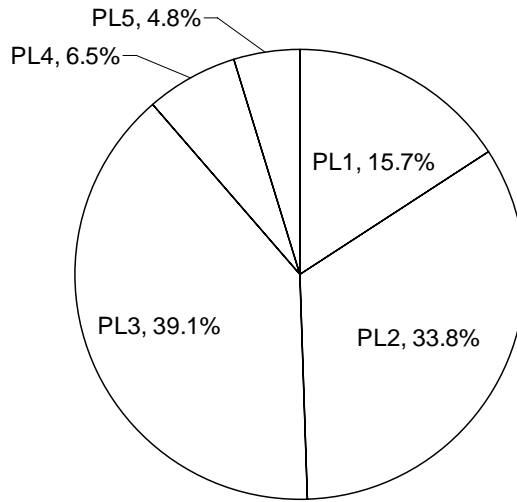


2007 Social Studies, Results, Grades 8 and 11

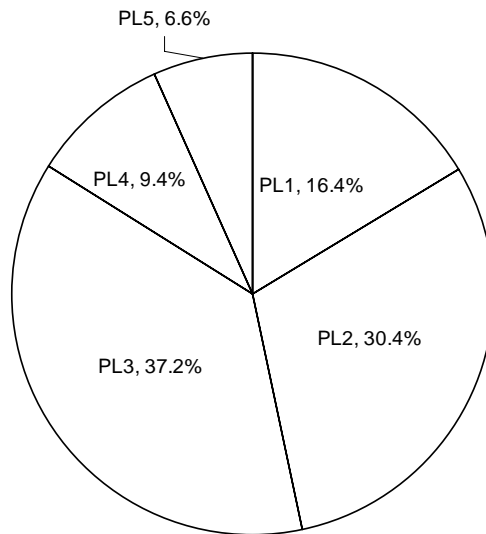
Chart 4, Student Performance Levels, DSTP Social Studies

(Percentages may not sum to exactly 100 because of rounding.)

Grade 8 Social Studies Performance Levels



Grade 11 Social Studies Performance Levels



PL1: Well Below the Standard	PL2: Below the Standard	PL3: Meets the Standard
PL4: Exceeds the Standard	PL5: Distinguished	

Chart 5, Standards-Based Scores, DSTP Social Studies

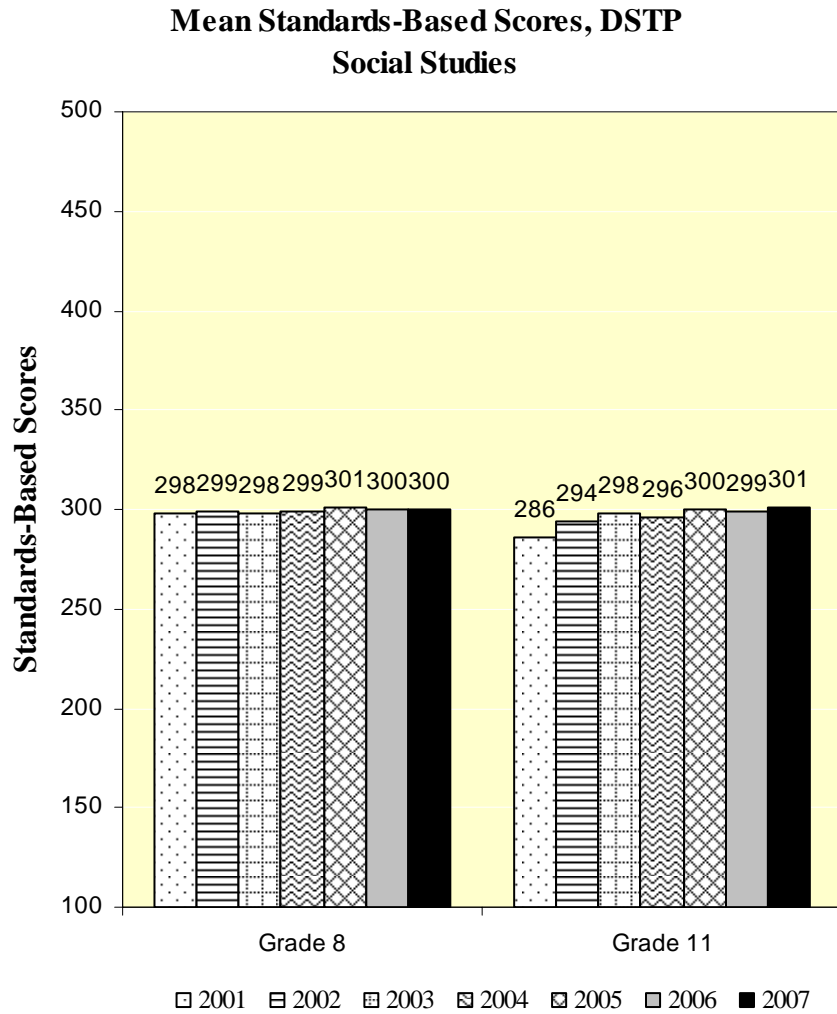
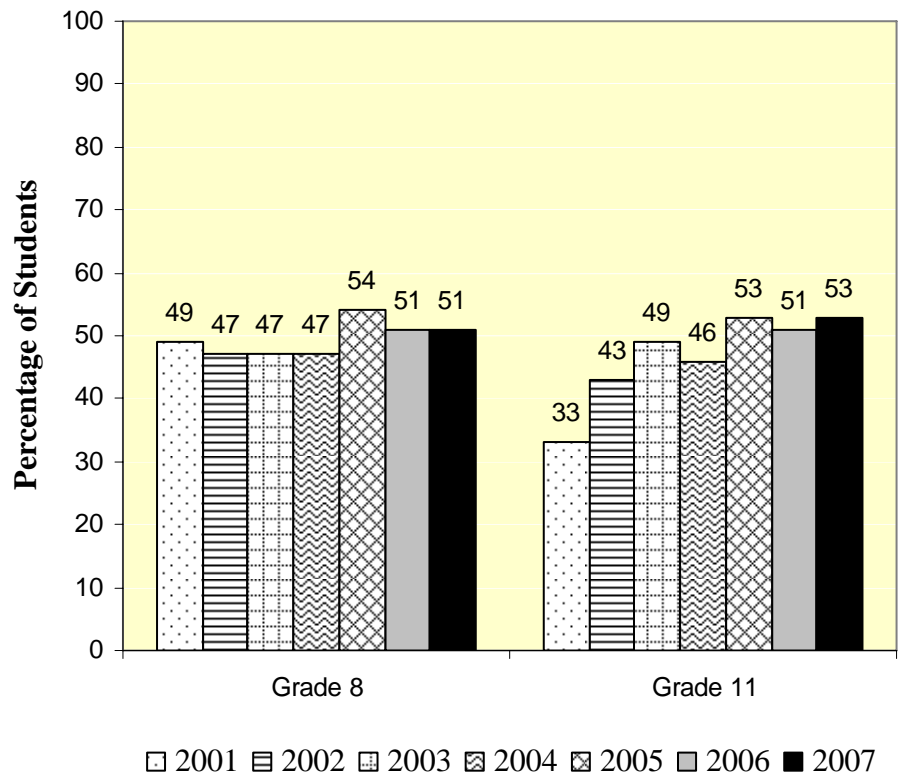


Chart 6, Students Meeting/Exceeding the Standard, DSTP Social Studies

Percentage of Students Meeting/Exceeding Delaware's Social Studies Standards



Summary of DAPA Scores

Table 5 Science—DAPA Scores

Grade	N	Performance Levels				
		Well Below	Below	Meets	Exceeds	Distinguished
8	111	18.9	9.0	12.6	27.0	32.4
11	128	7.8	8.6	8.6	26.6	48.4

Table 6 Social Studies—DAPA Scores

Grade	N	Performance Levels				
		Well Below	Below	Meets	Exceeds	Distinguished
8	111	18.0	12.6	9.0	25.2	35.1
11	128	13.3	3.9	10.2	27.3	45.3

Summary of Non-Aggregable Scores

Aggregable and non-aggregable scores are defined in the *Delaware Student Testing Program Guidelines for the Inclusion of Students with Disabilities and English Language Learners*:

“A **non-aggregable** score results when an accommodation changes the test construct (what the test is measuring) or modifies the test in such a way that the score can no longer be directly compared to scores of students testing under standard conditions.” (page 10)

“An **aggregable** score results when a student takes the DSTP under standard conditions (without accommodations), or with an accommodation that does not change the test construct.” (page 10)

See the *Guidelines for Inclusion* for more information about non-aggregable and aggregable accommodations. The following three tables summarize, statewide, the scores of students with disabilities and English language learners who took the DSTP with non-aggregable accommodations.

Table 7 Science—Non-Aggregable Scores

Grade	Standards-Based Scores			Performance Levels				
	N	Mean	SD	Well Below	Below	Meets	Exceeds	Distinguished
8	156	272.1	25.5	60.9	27.6	9.0	2.6	0.0
11	31	280.4	14.9	64.5	22.6	12.9	0.0	0.0

Table 8 Social Studies—Non-Aggregable Scores

Grade	Standards-Based Scores			Performance Levels				
	N	Mean	SD	Well Below	Below	Meets	Exceeds	Distinguished
8	156	283.6	18.1	42.9	45.5	9.6	1.3	0.6
11	31	259.7	53.1	71.0	22.6	6.5	0.0	0.0

Participation Rates

A goal of the DSTP and DAPA is to have as many as possible of Delaware’s public school students at each test grade participate. To achieve this goal, participation guidelines for students with disabilities and English language learners (ELL) and procedures for granting special exemptions and invalidations have been established by the DOE.

DSTP

Eligible N. All students enrolled in a public school are eligible to take the DSTP unless they participate in the Delaware Alternate Portfolio Assessment (DAPA) or they were granted a Special Exemption. It is the sum of “Tested N” and “Not Tested N.”

Exempt N. Some students were granted a special exemption from the DSTP due to physical or mental conditions or reasons of an emergency nature, such as death of a family member, accident, hospitalization, etc. Special exemptions or invalidations were also granted for students who were unable to complete all or part of the test due to conditions beyond the student’s control that developed during the weeks of testing. These students are counted in the “Exempt N” column.

Tested N. “Tested N” is the number of students who took the DSTP. Invalidations may have resulted due to behavior caused by the student such as cheating, disruptive behavior, refusal to test, etc. This type of invalidation resulted in a performance level 1 for the content area(s) affected and the student is counted in the “Tested N” column.

Not Tested N. Students are counted in the “Not Tested” column if they are eligible to take the DSTP but are absent during the entire test week and the make-up week that follows.

% Tested. The percent tested is calculated by dividing “Tested N” by “Eligible N.”

% Not Tested. The percent not tested is calculated by dividing “Not Tested N” by “Eligible N.”

Table 9 – Science Participation

Grade	Eligible N	Exempt N	Tested N	Not Tested N	% Tested	% Not Tested
8	10,330	41	9,915	415	96.0	4.0
11	7,740	21	7,175	565	92.7	7.3

Table 10 – Social Studies Participation

Grade	Eligible N	Exempt N	Tested N	Not Tested N	% Tested	% Not Tested
8	10,327	44	9896	431	95.8	4.2
11	7,740	21	7162	578	92.5	7.5

DAPA

Eligible N. A student is eligible to participate in the Delaware Alternate Portfolio Assessment (DAPA) if he/she meets the requirements in the *Guidelines for Inclusion* and the student’s IEP calls for participation in the DAPA. If such a student is granted a Special Exemption, he/she is excluded from counts of eligible students. Eligible N is the sum of “Tested N” and “Not Tested N.”

Exempt N. Some students were granted a special exemption from the DAPA due to physical or mental conditions or reasons of an emergency nature, such as death of a family member, accident, hospitalization, etc. Special exemptions were also granted for students who were unable to complete all or part of the portfolio due to conditions beyond the student’s control that developed during the data collection period. These students are counted in the “Exempt N” column.

Tested N. “Tested N” is the number of students who participated in the DAPA. A portfolio may have been scored as “Incomplete” if it was missing a required component or at least one of the scoring rules was not satisfied. A score of “Incomplete” resulted in a performance level 1 for the content area(s) affected. Therefore, such a student is counted in the “Tested N” column.

Not Tested N. A student is counted in the “Not Tested” column if he is eligible to participate in the DAPA but no portfolio was submitted and the student was not granted a special exemption.

% Tested. The percent tested is calculated by dividing “Tested N” by “Eligible N.”

% Not Tested. The percent not tested is calculated by dividing “Not Tested N” by “Eligible N.”

Table 11 – DAPA Science Participation Rates*

Grade	Eligible N	Exempt N	Tested N	Not Tested N	% Tested	% Not Tested
8	113	11	111	2	98.2	1.8
11	130	3	128	2	98.5	1.5

Table 12 – DAPA Social Studies Participation Rates*

Grade	Eligible N	Exempt N	Tested N	Not Tested N	% Tested	% Not Tested
8	113	11	111	2	98.2	1.8
11	130	3	128	2	98.5	1.5

District Results—Science, Grade 8

State/District	Grade	Standards-Based Score N	Standards Based Score Mean	Standards Based Score SD	% Well Below Standard	% Below Standard	% Meets the Standard	% Exceeds	% Distinguished	District % FRPL Eligible
State of Delaware	8	9,759	304.2	28.5	19.7	21.9	35.2	11.2	12.0	-
Appoquinimink	8	608	313.8	26.4	9.5	16.4	41.3	15.0	17.8	13.5
Brandywine	8	827	304.5	31.6	23.1	20.0	31.4	10.5	15.0	32.1
Caesar Rodney	8	602	314.4	24.8	8.6	15.3	41.5	17.9	16.6	31.3
Cape Henlopen	8	342	311.0	27.7	12.9	19.6	34.8	14.3	18.4	36.3
Capital	8	457	294.5	28.5	31.5	26.7	26.0	7.9	7.9	47.5
Christina	8	1,458	293.1	26.7	28.9	28.1	32.3	6.7	<5.0	38.6
Colonial	8	970	304.9	27.7	18.9	23.2	34.9	10.7	12.3	47.4
Delmar	8	173	308.9	26.9	16.2	18.5	36.4	12.1	16.8	27.5
Indian River	8	633	316.0	27.1	10.3	13.1	40.3	15.2	21.2	44.6
Lake Forest	8	316	304.4	23.6	16.8	21.2	42.1	13.3	6.6	38.1
Laurel	8	189	294.7	22.3	23.8	32.3	34.9	5.8	<5.0	51.5
Milford	8	355	305.2	23.4	13.8	24.5	40.3	13.0	8.5	36.7
Red Clay	8	1,323	301.7	28.5	21.8	23.4	34.0	9.5	11.3	41.4
Seaford	8	263	299.5	28.7	25.1	24.7	31.2	10.6	8.4	54.1
Smyrna	8	409	303.1	25.4	20.0	20.8	40.3	11.2	7.6	22.6
Woodbridge	8	145	304.3	21.9	15.9	23.4	42.1	11.0	7.6	53.7

District Results—Science, Grade 11

State/District	Grade	Standards-Based Score N	Standards Based Score Mean	Standards Based Score SD	% Well Below Standard	% Below Standard	% Meets the Standard	% Exceeds	% Distinguished	District % FRPL Eligible
State of Delaware	11	7,144	307.1	20.6	11.3	23.8	45.6	11.0	8.3	-
Appoquinimink	11	506	306.1	17.9	10.1	24.3	49.4	11.9	<5.0	13.5
Brandywine	11	656	305.7	21.9	15.1	22.3	44.1	10.7	7.9	32.1
Caesar Rodney	11	375	309.4	17.0	6.1	21.6	55.2	10.9	6.1	31.3
Cape Henlopen	11	267	313.5	22.5	6.7	22.1	38.6	15.4	17.2	36.3
Capital	11	270	301.4	22.3	22.2	23	38.9	9.6	6.3	47.5
Christina	11	808	300.9	21.8	18.2	30.1	37.7	8.5	5.4	38.6
Colonial	11	420	303.6	18.0	13.1	27.1	47.6	9.3	<5.0	47.4
Delmar	11	111	310.5	19.3	7.2	17.1	56.8	11.7	7.2	27.5
Indian River	11	412	308.9	19.0	8.3	23.5	46.4	14.6	7.3	44.6
Lake Forest	11	173	304.5	17.1	11.6	27.2	52	5.2	<5.0	38.1
Laurel	11	85	303.4	19.4	16.5	24.7	45.9	8.2	<5.0	51.5
Milford	11	230	308.2	21.0	10.9	23	45.2	10.4	10.4	36.7
New Castle County Vo Tech	11	816	306.0	16.6	8.2	27.1	52	9.2	<5.0	26.9
Polytech	11	249	310.9	16.9	<5.0	22.9	55.8	8.8	9.6	17.5
Red Clay	11	983	314.4	23.6	9.1	16.1	40.4	15.7	18.8	41.4
Seaford	11	106	307.4	18.7	5.7	33	44.3	7.5	9.4	54.1
Smyrna	11	223	301.5	19.2	15.2	30.9	43.5	5.8	<5.0	22.6
Sussex Tech	11	291	313.5	20.5	7.2	17.9	45	16.5	13.4	18.5
Woodbridge	11	93	301.1	16.8	11.8	26.9	54.8	5.4	<5.0	53.7

District Results—Social Studies, Grades 8

State/District	Grade	Standards-Based Score N	Standards Based Score Mean	Standards Based Score SD	% Well Below Standard	% Below Standard	% Meets the Standard	% Exceeds	% Distinguished	District % FRPL Eligible
State of Delaware	8	9,740	300.4	20.9	15.7	33.8	39.1	6.5	4.8	-
Appoquinimink	8	608	306.2	17.8	7.4	27.3	52.6	7.7	<5.0	13.5
Brandywine	8	827	301.7	22.9	17.5	31.9	32.3	8.9	9.3	32.1
Caesar Rodney	8	601	309.2	18.6	5.7	23.3	51.2	11.8	8	31.3
Cape Henlopen	8	342	303.4	19.3	12.9	30.7	43	7.6	5.8	36.3
Capital	8	456	294.2	20.4	26.5	36.4	29.4	<5.0	<5.0	47.5
Christina	8	1,456	294.1	21.0	21.7	39.1	34.8	<5.0	<5.0	38.6
Colonial	8	969	300.4	18.7	13.4	37.4	38.6	6.5	<5.0	47.4
Delmar	8	173	299.7	19.8	19.1	32.9	37.6	5.8	<5.0	27.5
Indian River	8	632	307.3	19.9	9.3	23.7	47	11.9	8.1	44.6
Lake Forest	8	315	301.6	18.4	12.4	32.4	46	5.7	<5.0	38.1
Laurel	8	188	292.5	16.3	23.9	45.7	28.2	<5.0	<5.0	51.5
Milford	8	353	300.7	17.3	11.3	38.8	42.5	<5.0	<5.0	36.7
Red Clay	8	1,317	298.5	19.0	17.1	37.3	36.2	6.3	<5.0	41.4
Seaford	8	264	295.0	21.2	25.8	34.1	34.1	<5.0	<5.0	54.1
Smyrna	8	410	298.4	17.4	15.9	35.9	42.7	<5.0	<5.0	22.6
Woodbridge	8	145	294.0	28.3	13.1	52.4	32.4	<5.0	<5.0	53.7

District Results—Social Studies, Grades 11

State/District	Grade	Standards-Based Score N	Standards Based Score Mean	Standards Based Score SD	% Well Below Standard	% Below Standard	% Meets the Standard	% Exceeds	% Distinguished	District % FRPL Eligible
State of Delaware	11	7,131	300.7	24.6	16.4	30.4	37.2	9.4	6.6	-
Appoquinimink	11	505	302.5	23.5	14.7	27.5	41.4	10.9	5.5	13.5
Brandywine	11	653	300.8	26.6	19.1	27.9	33.8	10.6	8.6	32.1
Caesar Rodney	11	376	303.0	19.8	9.6	31.6	47.1	9.0	<5.0	31.3
Cape Henlopen	11	267	307.2	24.0	12.4	22.5	41.9	13.1	10.1	36.3
Capital	11	271	292.5	27.6	27.3	30.6	29.9	8.1	<5.0	47.5
Christina	11	797	293.4	24.8	24.5	36.8	28.0	6.3	<5.0	38.6
Colonial	11	420	298.3	21.2	17.1	34.0	40.0	5.7	<5.0	47.4
Delmar	11	111	304.6	23.5	10.8	27.0	45.9	5.4	10.8	27.5
Indian River	11	413	301.9	22.2	13.6	29.8	42.1	9.9	<5.0	44.6
Lake Forest	11	172	301.0	21.3	11.0	30.8	49.4	5.2	<5.0	38.1
Laurel	11	84	297.4	22.7	22.6	29.8	40.5	<5.0	<5.0	51.5
Milford	11	231	301.2	25.6	18.6	26.4	38.1	7.8	9.1	36.7
New Castle County Vo Tech	11	816	295.6	20.3	17.2	38.5	37.5	5.4	<5.0	26.9
Polytech	11	249	302.9	20.2	11.2	31.7	41.4	11.6	<5.0	17.5
Red Clay	11	984	310.0	28.3	11.5	22.0	33.9	15.0	17.6	41.4
Seaford	11	106	301.2	21.5	12.3	36.8	36.8	9.4	<5.0	54.1
Smyrna	11	221	297.4	22.7	18.1	33.0	36.2	10.9	<5.0	22.6
Sussex Technical	11	291	306.4	22.5	11.3	24.4	43.6	13.1	7.6	18.5
Woodbridge	11	93	294.4	23.6	20.4	39.8	29.0	7.5	<5.0	53.7

School Results—Science, Grades 8 and 11

District/School	Grade	Standards-Based Score N	Standards Based Score Mean	Standards Based Score SD	% Well Below Standard	% Below Standard	% Meets the Standard	% Exceeds	% Distinguished	School % FRPL Eligible
State of Delaware	8	9,759	304.2	28.5	19.7	21.9	35.2	11.2	12.0	-
State of Delaware	11	7,144	307.1	20.6	11.3	23.8	45.6	11.0	8.3	-
Appoquinimink										
Everett Meredith Middle School	8	363	315.3	25.4	7.7	15.2	44.4	15.4	17.4	9.4
Redding (Louis L.) Middle School	8	245	311.6	27.7	12.2	18.4	36.7	14.3	18.4	20.5
Middletown High School	11	506	306.1	17.9	10.1	24.3	49.4	11.9	<5.0	11.2
Brandywine										
Hanby Middle School	8	349	307.5	30.8	18.6	18.9	35.5	9.7	17.2	29.5
Springer Middle School	8	301	308.7	31.1	21.3	17.9	30.6	12.6	17.6	30.5
Talley Middle School	8	177	291.6	30.8	35.0	25.4	24.9	8.5	6.2	42.9
Brandywine High School	11	255	309.6	20.7	9.8	19.2	49.4	12.2	9.4	23.9
Concord High School	11	218	302.9	22.3	17.0	25.7	41.3	9.6	6.4	21.9
Mount Pleasant High School	11	183	303.6	22.4	20.2	22.4	39.9	9.8	7.7	34.0
Caesar Rodney										
Caesar Rodney High School	8	8	-	-	-	-	-	-	-	24.4
Dover Air Force Base Middle School	8	52	324.6	21.3	<5.0	7.7	48.1	19.2	23.1	18.5
Fred Fifer Middle School	8	287	313.1	24.3	9.4	15.3	42.9	16.0	16.4	37.4
F. Niel Postlethwait Middle School	8	255	314.8	24.8	8.2	15.7	39.6	20.4	16.1	24.7
Caesar Rodney High School	11	375	309.4	17.0	6.1	21.6	55.2	10.9	6.1	24.4
Cape Henlopen										
Beacon Middle School	8	158	315.8	30.0	13.3	12.0	32.9	16.5	25.3	29.0
Mariner Middle School	8	180	307.7	24.5	11.7	26.1	36.7	12.8	12.8	44.0
Cape Henlopen High School	11	267	313.5	22.5	6.7	22.1	38.6	15.4	17.2	27.2
Capital										
Central Middle School	8	442	295.0	28.6	31.0	26.2	26.7	7.9	8.1	48.6
Dover High School	8	15	280.7	19.9	46.7	40.0	6.7	6.7	<5.0	35.4
Dover High School	11	265	302.1	21.9	20.8	23.4	39.6	9.8	6.4	35.4

School Results—Science, Grades 8 and 11

District/School	Grade	Standards-Based Score N	Standards Based Score Mean	Standards Based Score SD	% Well Below Standard	% Below Standard	% Meets the Standard	% Exceeds	% Distinguished	School % FRPL Eligible
State of Delaware	8	9,759	304.2	28.5	19.7	21.9	35.2	11.2	12.0	-
State of Delaware	11	7,144	307.1	20.6	11.3	23.8	45.6	11.0	8.3	-
Christina										
Christiana High School	8	14	-	-	-	-	-	-	-	31.0
Gauger-Cobbs Middle School	8	460	291.9	24.6	30.9	29.8	31.3	5.4	<5.0	42.2
Glasgow High School	8	50	274.4	25.3	60.0	20.0	18.0	<5.0	<5.0	38.7
George V. Kirk Middle School	8	441	296.9	24.8	23.1	27.4	36.5	9.1	<5.0	47.0
Newark High School*	8	31	282.8	20.6	35.5	41.9	22.6	<5.0	<5.0	27.4
Shue-Medill Middle School	8	436	294.8	29.8	25.9	28.0	32.6	6.7	6.9	37.9
Christiana High School	11	242	295.2	20.7	24.4	34.7	33.1	<5.0	<5.0	31.0
Glasgow High School	11	239	304.8	21.7	15.5	27.6	38.1	12.1	6.7	38.7
Newark High School	11	308	303.8	21.0	12.3	29.5	42.2	9.1	6.8	27.4
Colonial										
Gunning Bedford Middle School	8	423	313.7	28.2	13	18.7	32.9	14.4	21	33.8
New Castle Middle School	8	197	300.3	25.5	20.3	26.4	37.6	11.2	<5.0	57.3
Read Middle School	8	341	297.8	24.4	23.5	27.3	37.0	6.2	6.2	52.3
William Penn High School	11	416	303.9	17.7	12.3	27.4	48.1	9.4	<5.0	40.0
Delmar										
Delmar Middle School	8	171	309.3	26.7	15.8	18.1	36.8	12.3	17	33.7
Delmar Senior High School	8	2	-	-	-	-	-	-	-	21.8
Delmar Senior High School	11	111	310.5	19.3	7.2	17.1	56.8	11.7	7.2	21.8
Indian River										
Indian River High School	8	2	-	-	-	-	-	-	-	26.7
Southern Delaware School of the Arts	8	48	320.9	19.8	<5.0	6.3	54.2	14.6	22.9	17.0
Selbyville Middle School	8	215	321.7	25.6	6.0	9.8	37.2	18.1	28.8	40.7
Sussex Central High School	8	8	-	-	-	-	-	-	-	36.6
Sussex Central Middle School	8	354	314.0	27.1	11.0	15.8	41.8	14.1	17.2	49.4
Indian River High School	11	154	313.4	16.5	<5.0	18.2	53.2	16.9	8.4	26.7
Sussex Central Senior High School	11	255	306.7	19.5	10.2	27.1	42.7	13.3	6.7	36.6
Lake Forest										
Lake Forest High School	8	5	-	-	-	-	-	-	-	32.5
W. T. Chipman Middle School	8	311	304.7	23.6	16.4	20.9	42.4	13.5	6.8	35.9
Lake Forest High School	11	173	304.5	17.1	11.6	27.2	52.0	5.2	<5.0	32.5

School Results—Science, Grades 8 and 11

	Grade	Standards-Based Score N	Standards Based Score Mean	Standards Based Score SD	% Well Below Standard	% Below Standard	% Meets the Standard	% Exceeds	% Distinguished	School % FRPL Eligible
State/District										
State of Delaware	8	9,759	304.2	28.5	19.7	21.9	35.2	11.2	12.0	-
State of Delaware	11	7,144	307.1	20.6	11.3	23.8	45.6	11.0	8.3	-
Laurel										
Laurel Middle School	8	182	295.3	22.2	22.0	33.0	35.7	6.0	<5.0	46.9
Laurel Senior High School	8	7	-	-	-	-	-	-	-	50.1
Laurel Senior High School	11	84	303.9	19.0	15.5	25	46.4	8.3	<5.0	50.1
Milford										
Milford Middle School	8	333	306.8	23.1	12.3	22.8	42.0	13.8	9	34.8
Milford Senior High School	8	22	282.0	14.2	36.4	50.0	13.6	<5.0	<5.0	28.9
Milford Senior High School	11	230	308.2	21.0	10.9	23.0	45.2	10.4	10.4	28.9
New Castle Co. Vocational Technical										
Delcastle Technical High School	8	3	-	-	-	-	-	-	-	28.1
Hodgson Vo-Tech High School	8	8	-	-	-	-	-	-	-	14.5
Howard High School of Technology	8	33	280.4	21.0	51.5	30.3	15.2	<5.0	<5.0	42.8
St. Georges Technical High School	8	5	-	-	-	-	-	-	-	21.4
Delcastle Technical High School	11	364	308.8	16.2	5.2	24.7	54.9	9.6	5.5	28.1
Howard High School of Technology	11	202	299.2	16.9	15.8	37.1	41.6	<5.0	<5.0	42.8
Paul M. Hodgson Vo-Technical High	11	249	307.5	15.5	6.4	22.5	55.8	13.3	<5.0	14.5
Polytech										
Polytech High School	11	249	310.9	16.9	<5.0	22.9	55.8	8.8	9.6	17.5
Red Clay Consolidated										
A. I. duPont Middle School	8	152	290.9	23.5	30.9	32.2	28.3	7.2	<5.0	68.4
Alexis I. duPont High School	8	18	267.4	14.3	83.3	16.7	<5.0	<5.0	<5.0	26.7
Cab Calloway School of the Arts	8	138	315.8	21.9	<5.0	21.7	40.6	16.7	18.8	14.4
Conrad Middle School	8	209	288.7	27.6	31.6	31.6	30.6	<5.0	<5.0	74.0
HB duPont Middle School	8	286	314.9	25.6	9.4	16.4	39.2	12.6	22.4	18.4
John Dickinson High School	8	16	278.4	17.4	62.5	25.0	12.5	<5.0	<5.0	38.2
Skyline Middle School	8	240	309.7	27.0	16.3	17.5	37.9	10.8	17.5	26.5
Stanton Middle School	8	226	299.0	23.7	21.7	28.3	35.8	9.3	<5.0	54.1
Thomas McKean High School	8	11	-	-	-	-	-	-	-	41.2
Alexis I. duPont High School	11	242	309.3	19.3	7.9	22.3	48.3	12.8	8.7	26.7

School Results—Science, Grades 8 and 11

	Grade	Standards-Based Score N	Standards Based Score Mean	Standards Based Score SD	% Well Below Standard	% Below Standard	% Meets the Standard	% Exceeds	% Distinguished	School % FRPL Eligible
State/District										
State of Delaware	8	9,759	304.2	28.5	19.7	21.9	35.2	11.2	12.0	-
State of Delaware	11	7,144	307.1	20.6	11.3	23.8	45.6	11.0	8.3	-
Cab Calloway School of the Arts	11	97	314.1	18.5	5.2	11.3	54.6	16.5	12.4	14.4
Charter School of Wilmington	11	250	338.3	15.4	<5.0	<5.0	18.0	28	54	2.7
Delaware Military Academy	11	115	310.8	14.3	<5.0	20.0	60.9	11.3	6.1	11.2
John Dickinson High School	11	128	298.8	20.8	19.5	28.1	42.2	5.5	<5.0	38.2
Thomas McKean High School	11	133	303.1	19.3	17.3	24.1	42.9	12.8	<5.0	41.2
Seaford										
Seaford Middle School	8	242	302.2	27.2	21.5	24.4	33.5	11.6	9.1	56.6
Seaford Senior High School	8	21	267.8	27.2	66.7	28.6	<5.0	<5.0	<5.0	43.4
Seaford Senior High School	11	106	307.4	18.7	5.7	33.0	44.3	7.5	9.4	43.4
Smyrna										
Smyrna High School	8	24	273.4	21.4	66.7	16.7	16.7	<5.0	<5.0	15.2
Smyrna Middle School	8	385	304.9	24.5	17.1	21.0	41.8	11.9	8.1	20.5
Smyrna High School	11	223	301.5	19.2	15.2	30.9	43.5	5.8	<5.0	15.2
Sussex Technical										
Sussex Technical High School	8	2	-	-	-	-	-	-	-	18.5
Sussex Technical High School	11	291	313.5	20.5	7.2	17.9	45	16.5	13.4	18.5
Woodbridge										
Wheatley Middle School	8	145	304.3	21.9	15.9	23.4	42.1	11.0	7.6	53.4
Woodbridge Senior High School	11	93	301.1	16.8	11.8	26.9	54.8	5.4	<5.0	43.6
Charter Schools										
Campus Community School	8	72	296.9	24.5	19.4	31.9	37.5	<5.0	6.9	26.0
Campus Community School	11	35	308.4	17.3	<5.0	31.4	45.7	8.6	11.4	26.0
East Side Charter	8	13	-	-	-	-	-	-	-	78.5
Marion T. Academy Charter School	8	42	273.2	20.0	73.8	16.7	7.1	<5.0	<5.0	70.1
MOT Charter School	8	73	325.6	20.0	<5.0	6.8	37.0	23.3	31.5	5.5
Newark Charter School	8	151	339.5	27.2	<5.0	<5.0	27.8	19.2	47.7	5.7
Positive Outcomes Charter School	8	23	292.5	30.4	30.4	17.4	34.8	17.4	<5.0	34.4
Positive Outcomes Charter School	11	13	-	-	-	-	-	-	-	34.4
Providence Creek Charter School	8	79	306.3	20.6	8.9	20.3	55.7	8.9	6.3	32.7
Sussex Academy	8	96	324.3	19.2	<5.0	8.3	40.6	26.0	24.0	10.8
Thomas A. Edison Charter School	8	59	288.6	20.9	32.2	40.7	25.4	<5.0	<5.0	87.6

School Results—Social Studies, Grades 8 and 11

District/School	Grade	Standards-Based Score N	Standards Based Score Mean	Standards Based Score SD	% Well Below Standard	% Below Standard	% Meets the Standard	% Exceeds	% Distinguished	School % FRPL Eligible
State of Delaware	8	9,740	300.4	20.9	15.7	33.8	39.1	6.5	4.8	-
State of Delaware	11	7,131	300.7	24.6	16.4	30.4	37.2	9.4	6.6	-
Appoquinimink										
Everett Meredith Middle School	8	363	307.2	17.4	5.5	27.3	54.5	7.4	5.2	9.4
Redding (Louis L.) Middle School	8	245	304.7	18.3	10.2	27.3	49.8	8.2	<5.0	20.5
Middletown High School	11	505	302.5	23.5	14.7	27.5	41.4	10.9	5.5	11.2
Brandywine										
Hanby Middle School	8	347	302.5	21.5	15.9	27.7	40.1	8.1	8.4	29.5
Springer Middle School	8	302	306.7	23.6	15.2	28.1	30.8	11.9	13.9	30.5
Talley Middle School	8	178	291.6	21.1	24.7	46.6	19.7	5.6	<5.0	42.9
Brandywine High School	11	255	306.5	23.9	11.0	26.3	39.6	12.2	11	23.9
Concord High School	11	215	294.9	26.8	26.0	31.2	30.2	7.4	5.1	21.9
Mount Pleasant High School	11	183	300.0	28.4	22.4	26.2	30.1	12.0	9.3	34.0
Caesar Rodney										
Caesar Rodney High School	8	8	-	-	-	-	-	-	-	24.4
Dover Air Force Base Middle School	8	52	316.7	14.9	<5.0	15.4	55.8	13.5	15.4	18.5
F. Niel Postlethwait Middle School	8	254	310.4	18.3	<5.0	22.4	52.8	13.0	7.5	24.7
Fred Fifer Middle School	8	287	307.5	19.0	7.3	24.4	50.2	10.8	7.3	37.4
Caesar Rodney High School	11	376	303.0	19.8	9.6	31.6	47.1	9.0	<5.0	24.4
Cape Henlopen										
Beacon Middle School	8	158	308.5	21.0	12.7	17.7	46.8	12.7	10.1	29.0
Mariner Middle School	8	180	299.3	16.5	12.8	41.7	40.0	<5.0	<5.0	44.0
Cape Henlopen High School	11	267	307.2	24.0	12.4	22.5	41.9	13.1	10.1	27.2
Capital										
Central Middle School	8	441	294.6	20.4	26.3	35.6	30.2	<5.0	<5.0	48.6
Dover High School	8	15	282.7	16.3	33.3	60.0	6.7	<5.0	<5.0	35.4
Dover High School	11	265	293.3	27.3	25.7	31.3	30.6	8.3	<5.0	35.4

School Results—Social Studies, Grades 8 and 11

	Grade	Standards-Based Score N	Standards Based Score Mean	Standards Based Score SD	% Well Below Standard	% Below Standard	% Meets the Standard	% Exceeds	% Distinguished	School % FRPL Eligible
State/District										
State of Delaware	8	9,740	300.4	20.9	15.7	33.8	39.1	6.5	4.8	-
State of Delaware	11	7,131	300.7	24.6	16.4	30.4	37.2	9.4	6.6	-
Christina										
Christiana High School	8	13	-	-	-	-	-	-	-	31.0
Gauger-Cobbs Middle School	8	456	293.1	17.5	22.4	42.3	31.4	<5.0	<5.0	42.2
Glasgow High School	8	51	275.5	43.1	45.1	41.2	13.7	<5.0	<5.0	38.7
George V. Kirk Middle School	8	441	295.8	16.8	17.2	43.8	36.3	<5.0	<5.0	47.0
Newark High School	8	27	289.3	17.5	25.9	44.4	29.6	<5.0	<5.0	27.4
Shue-Medill Middle School	8	441	296.6	23.3	20.4	31.7	40.4	<5.0	<5.0	37.9
Christiana High School	11	234	287.2	24.7	30.3	43.2	20.1	<5.0	<5.0	31.0
Glasgow High School	11	239	296.0	23.5	20.9	37.7	30.1	6.7	<5.0	38.7
Newark High School	11	305	297.3	24.5	20.7	31.8	33.1	7.9	6.6	27.4
Colonial										
George Read Middle School	8	341	298.7	17.2	13.5	40.8	38.1	5.3	<5.0	52.3
Gunning Bedford Middle School	8	422	306.0	18.8	8.1	31.3	43.6	9.7	7.3	33.8
New Castle Middle School	8	197	293.0	16.2	21.3	45.7	30.5	<5.0	<5.0	57.3
William Penn High School	11	416	298.7	20.9	16.3	34.4	40.4	5.8	<5.0	40.0
Delmar										
Delmar Middle School	8	171	299.7	19.9	19.3	32.2	38	5.8	<5.0	33.7
Delmar Senior High School	8	2	-	-	-	-	-	-	-	21.8
Delmar Senior High School	11	111	304.6	23.5	10.8	27.0	45.9	5.4	10.8	21.8
Indian River										
Indian River High School	8	2	-	-	-	-	-	-	-	26.7
Southern Delaware School of the Arts	8	48	312.9	13.2	<5.0	16.7	60.4	12.5	8.3	17.0
Selbyville Middle School	8	215	311.9	19.6	6.5	21.9	42.3	16.7	12.6	40.7
Sussex Central High School	8	8	-	-	-	-	-	-	-	36.6
Sussex Central Middle School	8	353	305.5	18.8	9.3	25.8	49.9	9.3	5.7	49.4
Indian River High School	11	154	308.5	20.3	7.1	24.0	44.8	17.5	6.5	26.7
Sussex Central Senior High School	11	255	298.7	21.8	16.1	33.7	41.2	5.5	<5.0	36.6
Lake Forest										
Lake Forest High School	8	4	-	-	-	-	-	-	-	32.5
W. T. Chipman Middle School	8	311	301.8	18.5	12.5	31.5	46.6	5.8	<5.0	35.9
Lake Forest High School	11	172	301.0	21.3	11.0	30.8	49.4	5.2	<5.0	32.5

School Results—Social Studies, Grades 8 and 11

	Grade	Standards-Based Score N	Standards Based Score Mean	Standards Based Score SD	% Well Below Standard	% Below Standard	% Meets the Standard	% Exceeds	% Distinguished	School % FRPL Eligible
State/District										
State of Delaware	8	9,740	300.4	20.9	15.7	33.8	39.1	6.5	4.8	-
State of Delaware	11	7,131	300.7	24.6	16.4	30.4	37.2	9.4	6.6	-
Laurel										
Laurel Middle School	8	181	292.9	16.3	23.2	45.3	29.3	<5.0	<5.0	46.9
Laurel Senior High School	8	7	-	-	-	-	-	-	-	50.1
Laurel Senior High School	11	83	298.0	22.2	21.7	30.1	41.0	<5.0	<5.0	50.1
Milford										
Milford Middle School	8	331	301.4	17.2	10.0	38.7	43.5	<5.0	<5.0	34.8
Milford Senior High School	8	22	290.0	14.7	31.8	40.9	27.3	<5.0	<5.0	28.9
Milford Senior High School	11	231	301.2	25.6	18.6	26.4	38.1	7.8	9.1	28.9
New Castle Co. Vocational Technical										
Delcastle Technical High School	8	4	-	-	-	-	-	-	-	28.1
Howard High School of Technology	8	33	287.8	14.8	30.3	51.5	18.2	<5.0	<5.0	42.8
Paul M. Hodgson Vo-Technical High	8	8	-	-	-	-	-	-	-	14.5
St. Georges Technical School	8	5	-	-	-	-	-	-	-	21.4
Delcastle Technical High School	11	364	296.9	19.9	14.3	38.7	39.6	5.2	<5.0	28.1
Howard High School of Technology	11	202	289.5	21.1	25.7	45.0	24.3	<5.0	<5.0	42.8
Paul M. Hodgson Vo-Technical High	11	249	298.7	19.4	14.5	32.5	45.4	6.8	<5.0	14.5
Polytech										
Polytech High School	11	249	302.9	20.2	11.2	31.7	41.4	11.6	<5.0	17.5
Red Clay Consolidated										
A. I. duPont Middle School	8	152	293.7	17.0	21.7	46.1	27.0	<5.0	<5.0	68.4
Alexis I. duPont High School	8	18	277.3	8.8	61.1	38.9	<5.0	<5.0	<5.0	26.7
Cab Calloway School of the Arts	8	138	307.3	15.6	<5.0	35.5	45.7	12.3	<5.0	14.4
Conrad Middle School	8	208	290.0	16.4	27.9	43.3	27.4	<5.0	<5.0	74.0
HB duPont Middle School	8	285	307.9	19.8	8.1	26.3	44.2	12.3	9.1	18.4
John Dickinson High School	8	16	283.7	14.8	43.8	43.8	12.5	<5.0	<5.0	38.2
Skyline Middle School	8	239	301.6	17.7	12.1	33.1	45.6	5.9	<5.0	26.5
Stanton Middle School	8	226	295.7	15.8	16.4	46	34.1	<5.0	<5.0	54.1
Thomas McKean High School	8	10	-	-	-	-	-	-	-	41.2
Alexis I. duPont High School	11	242	304.4	22.4	11.2	28.1	43.0	12.0	5.8	26.7
Cab Calloway School of the Arts	11	97	309.1	23.3	8.2	23.7	40.2	17.5	10.3	14.4
Charter School of Wilmington	11	250	338.7	15.4	<5.0	<5.0	17.2	26.0	56.0	2.7

School Results—Social Studies, Grades 8 and 11

State/District	Grade	Standards-Based Score N	Standards Based Score Mean	Standards Based Score SD	% Well Below Standard	% Below Standard	% Meets the Standard	% Exceeds	% Distinguished	School % FRPL Eligible
State of Delaware	8	9,740	300.4	20.9	15.7	33.8	39.1	6.5	4.8	-
State of Delaware	11	7,131	300.7	24.6	16.4	30.4	37.2	9.4	6.6	-
Delaware Military Academy	11	115	310.7	16.5	<5.0	20.0	56.5	17.4	<5.0	11.2
John Dickinson High School	11	128	289.9	23.1	25.0	37.5	33.6	<5.0	<5.0	38.2
Thomas McKean High School	11	132	295.1	24.6	19.7	37.9	30.3	10.6	<5.0	41.2
Seaford										
Seaford Middle School	8	243	296.6	20.4	23.0	34.2	36.2	<5.0	<5.0	56.6
Seaford Senior High School	8	21	276.5	22.4	57.1	33.3	9.5	<5.0	<5.0	43.4
Seaford Senior High School	11	106	301.2	21.5	12.3	36.8	36.8	9.4	<5.0	43.4
Smyrna										
Smyrna High School	8	25	278.0	17.6	64.0	24.0	12.0	<5.0	<5.0	15.2
Smyrna Middle School	8	385	299.7	16.6	12.7	36.6	44.7	<5.0	<5.0	20.5
Smyrna High School	11	221	297.4	22.7	18.1	33.0	36.2	10.9	<5.0	15.2
Sussex Technical										
Sussex Technical High School	8	2	-	-	-	-	-	-	-	18.5
Sussex Technical High School	11	291	306.4	22.5	11.3	24.4	43.6	13.1	7.6	18.5
Woodbridge										
Wheatley Middle School	8	145	294.0	28.3	13.1	52.4	32.4	<5.0	<5.0	53.4
Woodbridge Senior High School	11	93	294.4	23.6	20.4	39.8	29.0	7.5	<5.0	43.6
Charter Schools										
Campus Community School	8	72	295.6	18.0	20.8	38.9	34.7	<5.0	<5.0	26.0
Campus Community School	11	35	302.3	19.7	<5.0	54.3	28.6	5.7	8.6	26.0
East Side Charter	8	13	-	-	-	-	-	-	-	78.5
Marion T. Academy Charter School	8	40	272.7	46.6	62.5	27.5	10.0	<5.0	<5.0	70.1
MOT Charter School	8	73	313.2	15.2	<5.0	23.3	52.1	16.4	6.8	5.5
Newark Charter School	8	150	327.3	19.1	<5.0	<5.0	42.0	22.7	30.7	5.7
Positive Outcomes Charter School	8	23	290.4	17.5	21.7	47.8	30.4	<5.0	<5.0	34.4
Positive Outcomes Charter School	11	13	-	-	-	-	-	-	-	34.4
Providence Creek Charter School	8	78	298.7	14.7	9.0	43.6	43.6	<5.0	<5.0	32.7
Sussex Academy of Arts & Sciences	8	96	319.7	15.8	<5.0	10.4	51.0	15.6	21.9	10.8
Thomas A. Edison Charter School	8	57	292.6	14.8	19.3	36.8	43.9	<5.0	<5.0	87.6

Special Schools—Science, Grades 8 and 11

State/District	Grade	Standards-Based Score N	Standards Based Score Mean	Standards Based Score SD	% Well Below Standard	% Below Standard	% Meets the Standard	% Exceeds	% Distinguished
Cape Henlopen									
Sussex Consortium ILC	8	4	-	-	-	-	-	-	-
Capital									
Kent County Secondary ILC	11	5	-	-	-	-	-	-	-
Christina									
Brennen School	8	3	-	-	-	-	-	-	-
Douglass Alternative	8	18	271.0	21.8	77.8	5.6	16.7	<5.0	<5.0
Sarah Pyle Academy	8	1	-	-	-	-	-	-	-
Margaret S. Sterck School	8	4	-	-	-	-	-	-	-
Douglass Alternative	11	1	-	-	-	-	-	-	-
Sarah Pyle Academy	11	12	-	-	-	-	-	-	-
Margaret S. Sterck School	11	6	-	-	-	-	-	-	-
Colonial									
Colonial Intensive Lrn Ctr	8	9	-	-	-	-	-	-	-
Colonial Intensive Lrn Ctr	11	4	-	-	-	-	-	-	-
Indian River									
Richard Allen School	8	6	-	-	-	-	-	-	-
Richard Allen School	11	3	-	-	-	-	-	-	-
Laurel									
W Sussex Academy	11	1	-	-	-	-	-	-	-
Red Clay Consolidated									
The Community School	8	15	264.8	19.3	73.3	26.7	<5.0	<5.0	<5.0
The Community School	11	8	-	-	-	-	-	-	-
First State School	8	4	-	-	-	-	-	-	-
First State School	11	2	-	-	-	-	-	-	-
Central School	8	8	-	-	-	-	-	-	-
Central School	11	8	-	-	-	-	-	-	-

Special Schools—Science, Grades 8 and 11

State/District	Grade	Standards-Based Score N	Standards Based Score Mean	Standards Based Score SD	% Well Below Standard	% Below Standard	% Meets the Standard	% Exceeds	% Distinguished
Department Services Children, Youth and Families									
Camelot	8	1	-	-	-	-	-	-	-
Camelot	11	2	-	-	-	-	-	-	-
Ferris School	8	5	-	-	-	-	-	-	-
Ferris School	11	7	-	-	-	-	-	-	-
Grace and Snowden Cottages	8	2	-	-	-	-	-	-	-
Grace and Snowden Cottages	11	2	-	-	-	-	-	-	-
Multiple Alternative Program	11	1	-	-	-	-	-	-	-
NCC Detention Center	8	3	-	-	-	-	-	-	-
NCC Detention Center	11	9	-	-	-	-	-	-	-
Northeast Treatment Center	8	2	-	-	-	-	-	-	-
Seaford House Day Treatment Center	8	6	-	-	-	-	-	-	-
Silver Lake Treatment Center	8	2	-	-	-	-	-	-	-
Stevenson House Detention Center	8	9	-	-	-	-	-	-	-
Stevenson House Detention Center	11	2	-	-	-	-	-	-	-

Special Schools—Social Studies, Grades 8 and 11

State/District	Grade	Standards-Based Score N	Standards Based Score Mean	Standards Based Score SD	% Well Below Standard	% Below Standard	% Meets the Standard	% Exceeds	% Distinguished
Cape Henlopen									
Sussex Consortium ILC	8	4	-	-	-	-	-	-	-
Capital									
Kent County Secondary ILC	11	6	-	-	-	-	-	-	-
Christina									
Brennen School	8	3	-	-	-	-	-	-	-
Douglass Alternative	8	19	279.5	18.6	63.2	15.8	21.1	<5.0	<5.0
Sarah Pyle Academy	8	1	-	-	-	-	-	-	-
Margaret S. Sterck School	8	4	-	-	-	-	-	-	-
Douglass Alternative	11	1	-	-	-	-	-	-	-
Sarah Pyle Academy	11	12	-	-	-	-	-	-	-
Margaret S. Sterck School	11	6	-	-	-	-	-	-	-
Colonial									
Colonial Intensive Lrn Ctr	8	9	-	-	-	-	-	-	-
Colonial Intensive Lrn Ctr	11	4	-	-	-	-	-	-	-
Indian River									
Richard Allen School	8	6	-	-	-	-	-	-	-
Richard Allen School	11	4	-	-	-	-	-	-	-
Laurel									
W Sussex Academy	11	1	-	-	-	-	-	-	-
Red Clay Consolidated									
Central School	8	7	-	-	-	-	-	-	-
Central School	11	9	-	-	-	-	-	-	-
Community School	8	14	-	-	-	-	-	-	-
Community School	11	9	-	-	-	-	-	-	-
First State School	8	4	-	-	-	-	-	-	-
First State School	11	2	-	-	-	-	-	-	-

Special Schools—Social Studies, Grades 8 and 11

State/District	Grade	Standards-Based Score N	Standards Based Score Mean	Standards Based Score SD	% Well Below Standard	% Below Standard	% Meets the Standard	% Exceeds	% Distinguished
Department Services Children, Youth and Their Families									
Camelot	8	1	-	-	-	-	-	-	-
Camelot	11	2	-	-	-	-	-	-	-
Ferris School	8	5	-	-	-	-	-	-	-
Ferris School	11	7	-	-	-	-	-	-	-
Grace and Snowden Cottages	8	2	-	-	-	-	-	-	-
Grace and Snowden Cottages	11	2	-	-	-	-	-	-	-
Multiple Alternative Program	11	1	-	-	-	-	-	-	-
NCC Detention Center	8	3	-	-	-	-	-	-	-
NCC Detention Center	11	9	-	-	-	-	-	-	-
Northeast Treatment Center	8	2	-	-	-	-	-	-	-
Seaford House Day Treatment Center	8	6	-	-	-	-	-	-	-
Silver Lake Treatment Center	8	2	-	-	-	-	-	-	-
Stevenson House Detention Center	8	9	-	-	-	-	-	-	-
Stevenson House Detention Center	11	3	-	-	-	-	-	-	-

DAPA Science District Results— Grades 8 and 11

District	Grade	Standards-Based Score N	% Well Below Standard	% Below Standard	% Meets the Standard	% Exceeds	% Distinguished	District % FRPL Eligible
Appoquinimink	8	5	-	-	-	-	-	13.5
Brandywine	8	6	-	-	-	-	-	32.1
Caesar Rodney	8	20	10.0	15.0	10.0	10.0	55.0	31.3
Cape Henlopen	8	10	-	-	-	-	-	36.3
Capital	8	8	-	-	-	-	-	47.5
Christina	8	20	5.0	10.0	15.0	50.0	20.0	38.6
Colonial	8	12	-	-	-	-	-	47.4
Indian River	8	7	-	-	-	-	-	44.6
Lake Forest	8	1	-	-	-	-	-	38.1
Laurel	8	1	-	-	-	-	-	51.5
Red Clay Consolidated	8	8	-	-	-	-	-	41.4
Seaford	8	8	-	-	-	-	-	54.1
Smyrna	8	1	-	-	-	-	-	22.6
Woodbridge	8	4	-	-	-	-	-	53.7
Appoquinimink	11	4	-	-	-	-	-	13.5
Brandywine	11	5	-	-	-	-	-	32.1
Caesar Rodney	11	22	<5.0	<5.0	<5.0	36.4	54.5	31.3
Cape Henlopen	11	9	-	-	-	-	-	36.3
Capital	11	10	-	-	-	-	-	47.5
Christina	11	19	15.8	5.3	10.5	21.1	47.4	38.6
Colonial	11	17	<5.0	17.6	11.8	29.4	41.2	47.4
Delmar	11	2	-	-	-	-	-	27.5
Indian River	11	8	-	-	-	-	-	44.6
Lake Forest	11	1	-	-	-	-	-	38.1
Laurel	11	6	-	-	-	-	-	51.5
New Castle County Vo Tech	11	11	-	-	-	-	-	26.9
Red Clay Consolidated	11	6	-	-	-	-	-	41.4
Seaford	11	6	-	-	-	-	-	54.1
Smyrna	11	2	-	-	-	-	-	22.6

DAPA Social Studies District Results— Grades 8 and 11

District	Grade	Standards-Based Score N	% Well Below Standard	% Below Standard	% Meets the Standard	% Exceeds	% Distinguished	District % FRPL Eligible
Appoquinimink	8	5	-	-	-	-	-	13.5
Brandywine	8	6	-	-	-	-	-	32.1
Caesar Rodney	8	20	5.0	35.0	<5.0	15.0	45.0	31.3
Cape Henlopen	8	10	-	-	-	-	-	36.3
Capital	8	8	-	-	-	-	-	47.5
Christina	8	20	<5.0	5.0	30.0	40.0	25.0	38.6
Colonial	8	12	-	-	-	-	-	47.4
Indian River	8	7	-	-	-	-	-	44.6
Lake Forest	8	1	-	-	-	-	-	38.1
Laurel	8	1	-	-	-	-	-	51.5
Red Clay Consolidated	8	8	-	-	-	-	-	41.4
Seaford	8	8	-	-	-	-	-	54.1
Smyrna	8	1	-	-	-	-	-	22.6
Woodbridge	8	4	-	-	-	-	-	53.7
Appoquinimink	11	4	-	-	-	-	-	13.5
Brandywine	11	5	-	-	-	-	-	32.1
Caesar Rodney	11	22	<5.0	<5.0	27.3	27.3	45.5	31.3
Cape Henlopen	11	9	-	-	-	-	-	36.3
Capital	11	10	-	-	-	-	-	47.5
Christina	11	19	10.5	<5.0	26.3	21.1	42.1	38.6
Colonial	11	17	17.6	23.5	5.9	23.5	29.4	47.4
Delmar	11	2	-	-	-	-	-	27.5
Indian River	11	8	-	-	-	-	-	44.6
Lake Forest	11	1	-	-	-	-	-	38.1
Laurel	11	6	-	-	-	-	-	51.5
New Castle County Vo Tech	11	11	-	-	-	-	-	26.9
Red Clay Consolidated	11	6	-	-	-	-	-	41.4
Seaford	11	6	-	-	-	-	-	54.1
Smyrna	11	2	-	-	-	-	-	22.6